

Alaska Department of Fish and Game

Habitat Section
Southeast Region



191-20-13400-2040-3011 Tributary 1

ADDITION

Water body name:

Survey date: 8/24/2024

Quad: Icy Bay D2, D3

Species & Lifestage:

Upper Reach Latitude: 59.993482 **Longitude:** -141.744636

Survey crew: NJ, CD, FC

Lower Reach Latitude: 59.993386 **Longitude:** -141.744676

Findings: We surveyed this uncataloged stream using a backpack electrofisher and GPS and captured juvenile coho salmon and Dolly Varden. This stream has a 1 ft step pool just above the confluence with the main stem. Fish habitat is present but channel becomes very incised further up (Table 1; Figures 1–3).

Recommendations: Add this uncataloged stream to the anadromous waters catalog for rearing coho salmon (Figure 4).

Nomination: Pending

Table 1.–191-20-13400-2040-3011 tributary 1 survey data.

Waypoint	Latitude	Longitude	Notes	Stream Width ft	Stream Substrate	Habitat Features	Gradient %	Sample Effort	Sample Results
1171	59.993389	-141.744698	Another tributary enters main channel at this point. This new tributary may be a distrib of a catalog stream to the west. Will follow up to see if fish are present, channel is incised. Coho caught near mouth of tributary just below 1 foot step pool.		Large Gravel		4-6	EF	2 CO
1172	59.994221	-141.745977	Continue to follow stream, gradient increasing. Lots of woody debris in channel. Several step pools presents up to this point ranging from .5 to 1 foot. Channel becoming more incised, and narrowing intermittently to a width of approximately 5 to 10 feet. Ending survey here due to only finding Dolly Varden, will fish back downstream on the way out.		Large Gravel Fine Organic		6-8	EF	3 DV
1173	59.993486	-141.744658	Good fish habitat although gradient increasing slightly and channel gets very incised upstream.		Large Gravel		4-6		2 CO 1 DV



Figure 1.–Juvenile coho salmon caught at waypoint 1173.



Figure 2.—Looking upstream at waypoint 1173.



Figure 3.—Looking upstream at waypoint 1172.

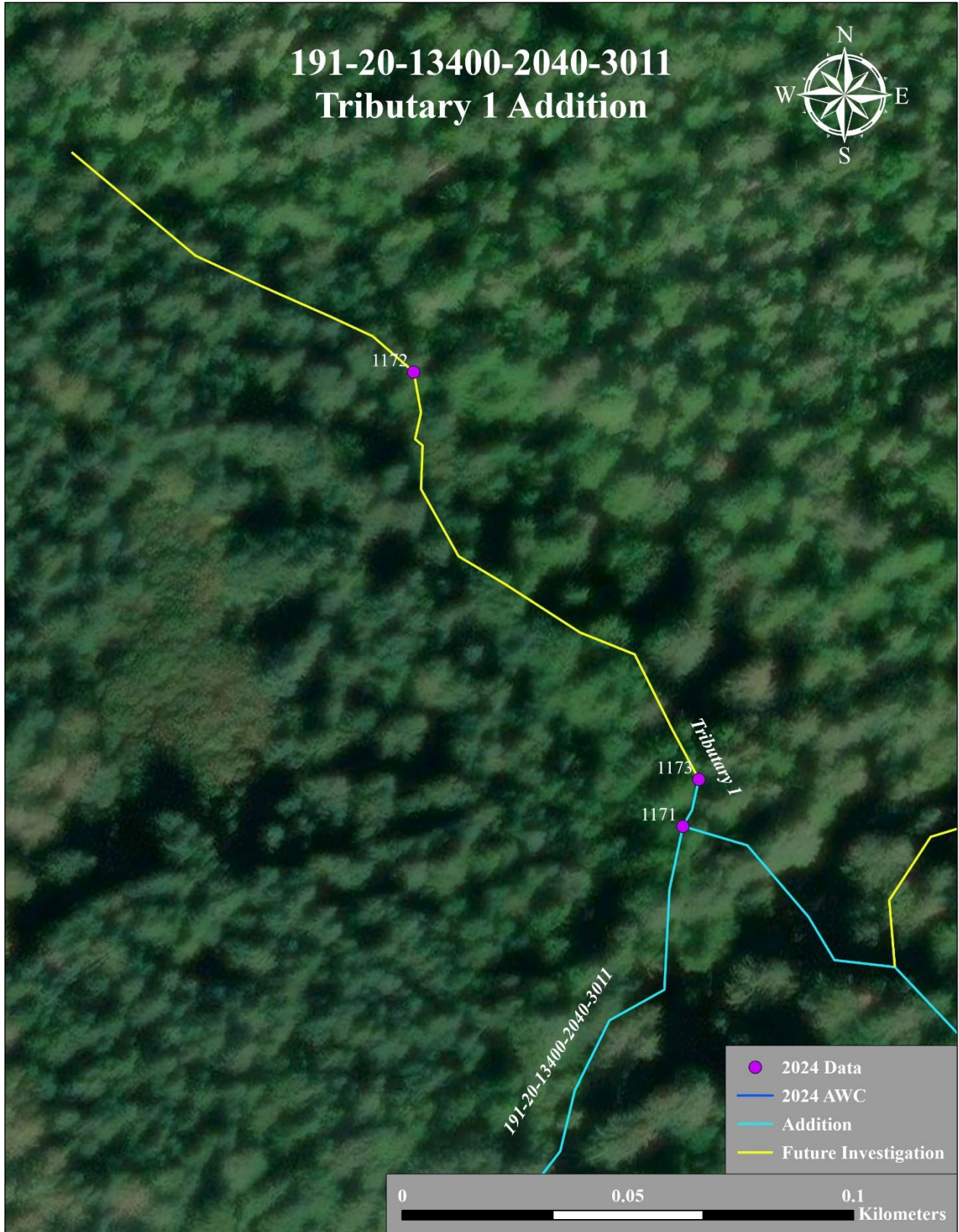


Figure 4.—191-20-13400-2040-3011 tributary 1 addition map.